



ArtsAcoustic BigRock Manual



Thank you for choosing an ArtsAcoustic product. We have been putting a lot of research, heart and passion into this product and we hope that you greatly enjoy it as much as we do.



Contents

Contents.....	2
Introduction	4
What exactly is the ArtsAcoustic BigRock?	4
Philosophy of the ArtsAcoustic BigRock.....	4
System requirements	6
Installation.....	7
Installation - Windows	7
Step 1 – Welcome	7
Step 2 – License Agreement	7
Step 3 – Destination Folder	8
Step 4 – VSTPlugins Folder	8
Step 5 – User Preset Folder	9
Step 6 – Start menu Folder	9
Installation - Mac.....	10
Step 1 – Install/Uninstall.....	10
Step 2 – Introduction	10
Step 3 – Read Me	11
Step 4 – License	11
Step 5 – Select Destination	12
Step 6 – Installation Type.....	12
Step 7 – Summary.....	13
Copy protection.....	13
Uninstall.....	14
BigRock - Overview	15
Feature	15
Tips and Tricks	15
BigRock - Details	16
Signal Flow Diagram.....	16
Features and Functions	16
General Functions	16
File Menu.....	16
Preset Menu	16
Bypass.....	16
Basic Mode Functions	17
UI overview	17
Color Type	17
LFO Rate	17
Bypass.....	17
Advanced Mode	18
Advanced Mode Functions	18
UI overview	18
LFO Rate	18
Color.....	19
Octave Amount.....	19
Center.....	19



L/R Phase Offset	19
LP Cutoff.....	19
HP Cutoff.....	19
Dry/Wet	19
Sync On/Off.....	19
Sync Phase	20
Usage.....	21
Knobs, Sliders.....	21
Buttons, Switches	21
Parameter Automation	22
Preset Manager.....	23
Presets	23
Factory Presets	23
User Presets	23
Autoload Preset.....	23
File Menu.....	23
Open.....	24
Save.....	24
Select User Preset Folder.....	24
About.....	24
Preset Menu	24
New.....	25
Save.....	25
Save As.....	25
Delete.....	25
Refresh	26
Default settings	26
Factory Presets >	26
User Presets >	26
Preset Browser	26
Final Words.....	27
Support.....	27
License Agreement	28
License of unregistered Software.....	28
Grant of License	28
Copyright.....	28
Acceptance of this license agreement.....	28
Disclaimer of warranty and liability.....	28
Other restrictions	29
Invalid provisions	29
Entire agreement	29
General.....	29
Copyrights and Trademarks	30
Appendix I - Factory Presets	31
Appendix II – Version History	32



Introduction

First let us say thank you for purchasing the ArtsAcoustic BigRock. You are now able to use and enjoy an advanced, accurate emulation of one of the most popular phase shifting units that ever existed.

What exactly is the ArtsAcoustic BigRock?

The BigRock is an authentic, accurately modeled emulation of the Electro-Harmonix Small Stone, a phase shifting stomp box, of which its first revision was released in 1974. During the last three decades Electro-Harmonix released 8 revisions, of which we have chosen to emulate the US second revision (mkII). It was released 1976 and is considered to be the best sounding one.

The Small Stone was and still is used by an awful lot of famous musicians, but the one artist who made the Small Stone really turn into a legend was Jean Michel Jarre. He used the Small Stone mkII on all his early recordings, such as Oxygene, Equinox, Magnetic Fields and many more. Originally designed as a guitar effect (stomp box), Jarre used it on his string machines, mostly on the Eminent 310U, but also on the Solina String Ensemble, Crumar Multiman, etc. The combination of these soaring, uniquely sounding string machines and the Small Stone turned the sound into a spacey atmosphere that never was heard before and still is highly unique and addictive.

Philosophy of the ArtsAcoustic BigRock

There are already quite some Phaser Plugins available. So what made us believe that there is the need for another one?

If you know ArtsAcoustic, then you know the answer: It's the sound. While some Phaser Plugins loosely remind you of a Small Stone, they never made it to the magic of a Small Stone. If you wanted the sound of a Small Stone, up to now there was no other way than to use the old original hardware.

Most Phaser Plugins out there are simple digital multistage allpass filter structures, which are modulated by an LFO. The Small Stone was different in many ways. It also uses some allpass filters but the complex filter design gives the sound a very stable, distinctive and fat character. Beside the analog design the Small Stone is based on OTA's rather than Opamps, which colors the sound in addition. The outcome is a very unique and very pleasing phase shifting, which pure allpass filter structures cannot provide.

All this said, the original Small Stone is feature-wise very limited. Mono only, one switch for high and low color mode, a speed knob for the LFO and a bypass footswitch - that's all you get.

While being in love with the sound of the Small Stone, we felt it's not appropriate to give the user a Plugin that is limited that strict. Hence we decided to dig deep into the DNA of the real Small Stone partly modeling the components, where we felt it was necessary and additionally made some functions that a good phaser needs, see the light of day.



First of all the BigRock is stereo, so you can feed mono and stereo signals into it. Furthermore you are now able to switch to an advanced mode, which provides the user with some more features the Small Stone never had, such as continuous left/right phase offsets of the LFO, a morphing between high and low color mode, effectively making the switch a knob to control the feedback continuously. On top you can now define the center frequency and the range of the LFO, as well as we added a basic lowpass and highpass filter for tonal corrections. Finally we added a mix knob, to be able to balance the phaser signal with the dry signal.

Today, when working with software sequencers, one thing cannot be missed, so, yes, the BigRock can be synced to the host tempo, as well as the LFO's phase is then synced to the hosts position, while you are able to define the phase offset. So whenever you play back your song the LFO will always be at the same phase it was before. This ensures that your song will always sound the same.



System requirements

- This software is a Plugin for Microsoft Windows / Mac OS X (further details below). You will need a host software where you can run it in. It cannot be run as a stand-alone application.
- The Plugin relies on the VST™ 2.4 (Virtual Studio Technology) specification by Steinberg™ (Windows and Mac) or the Audio Units Standard by Apple (Mac Only). It can only be run in a host that supports at least one of these standard architectures.
- Please refer to your hosts manual to assure that your host software supports either the VST-Technology or the Audio Units Standard.

Windows	Macintosh
<p><u>Required:</u></p> <ul style="list-style-type: none">• Pentium / Athlon 800 MHz• 128 MB RAM• Windows XP, Windows Vista (32/64 bit), Windows 7 (32/64 bit)• Windows MME compatible audio hardware• VST 2.4 compatible Host• Display Resolution 1024 x 768 pixels	<p><u>Required:</u></p> <ul style="list-style-type: none">• Macintosh with G4 or Core Solo Processor• 128 MB RAM• OS X Version 10.5.x – 10.6.x• CoreAudio compatible audio hardware• VST 2.4 or AU compatible Host• Display Resolution 1024 x 768 pixels
<p><u>Recommended:</u></p> <ul style="list-style-type: none">• Pentium / Athlon 1.8 GHz or faster• 512 MB RAM• Display Resolution 1152 x 864 pixels, dual monitor setup• ASIO compatible sound card recommended	<p><u>Recommended:</u></p> <ul style="list-style-type: none">• Power Mac G4 Dual 1.25 GHz or faster• 512 MB RAM• Display Resolution 1152 x 864 pixels, dual monitor setup



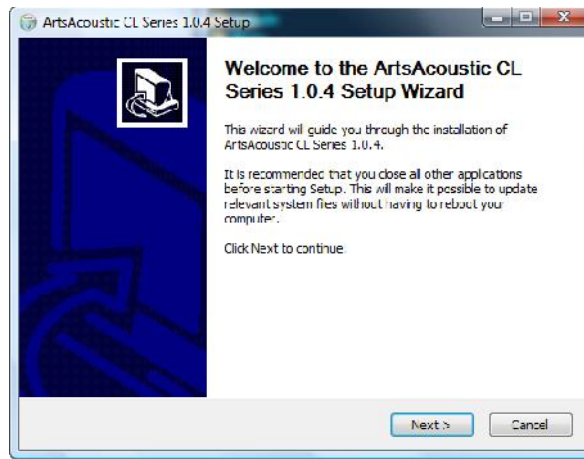
Installation

This section will assist you with installing the ArtsAcoustic BigRock on a Windows system.

Installation - Windows

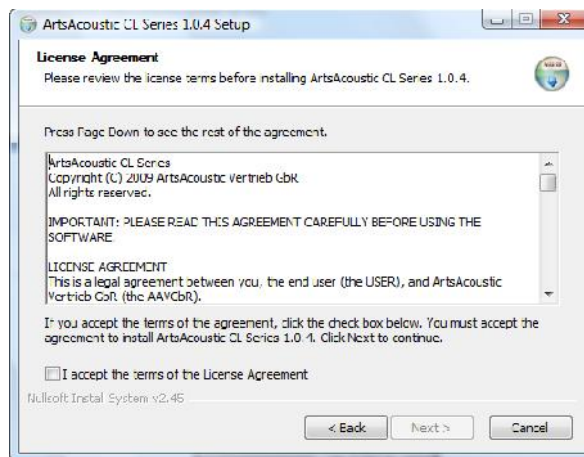
Double-click the installer to start the installation.

Step 1 – Welcome



Click Next> to continue.

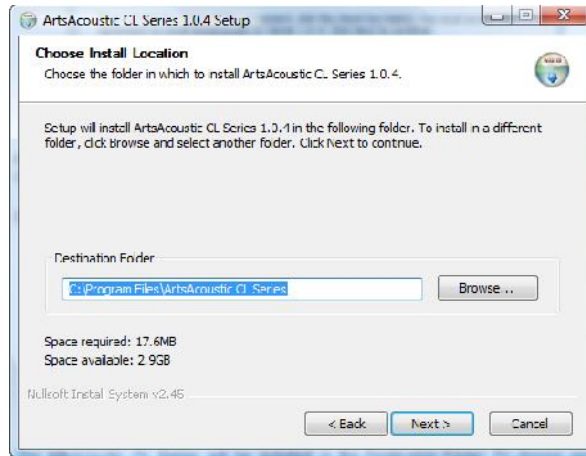
Step 2 – License Agreement



Please read the license agreement and click the checkbox if you agree to the terms. Click Next> to continue.

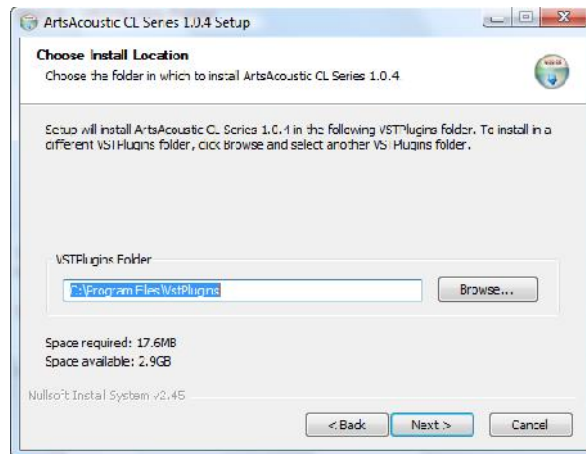


Step 3 – Destination Folder



The ArtsAcoustic BigRock will be installed in the Destination Folder. To choose another location, click Browse. Click Next> to continue.

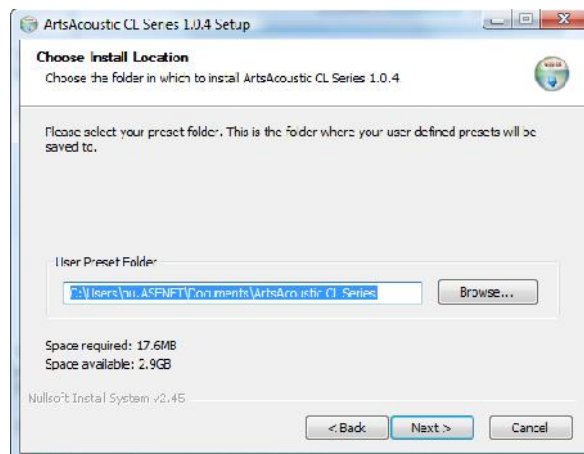
Step 4 – VSTPlugins Folder



The VST part of the Plugin will be installed in the VSTPlugins Folder. To choose another location, click Browse. Click Next> to continue.

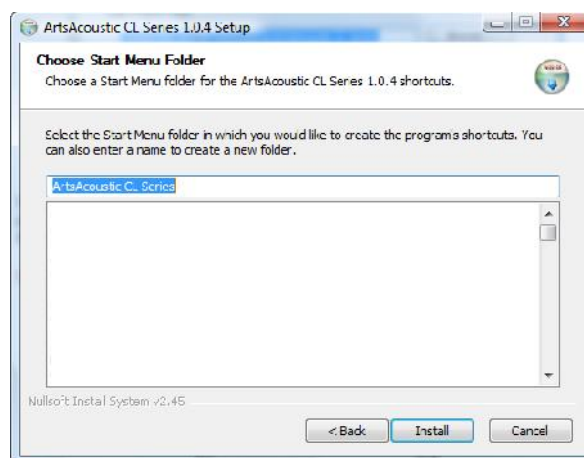


Step 5 – User Preset Folder



The ArtsAcoustic BigRock User Presets will be saved in the User Preset Folder. To choose another location, click Browse. Click Next> to continue. You can change the User Preset Folder afterwards within the Plugin editor.

Step 6 – Start menu Folder



Click Install to continue.



Installation - Mac

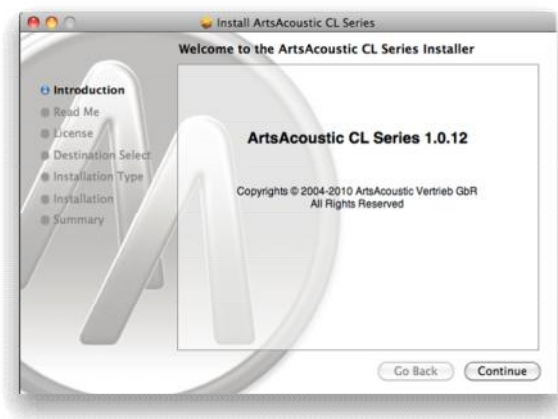
Double-click the installer package icon to start the installation.

Step 1 – Install/Uninstall



Choose what you want to do. You can either install the actual version or uninstall a older version.

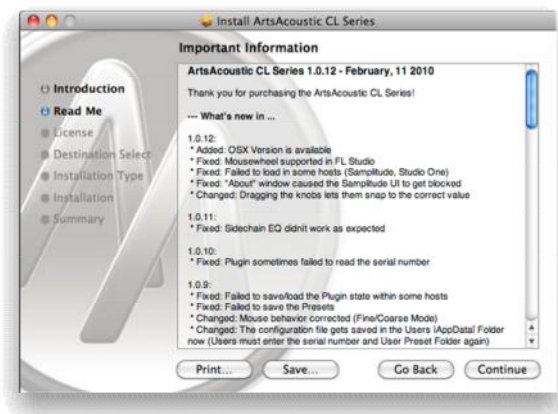
Step 2 – Introduction



Click 'Continue' to continue.

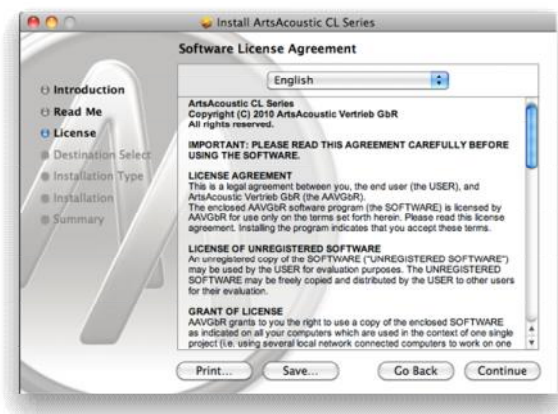


Step 3 – Read Me



Click 'Continue' to continue.

Step 4 – License



Click 'Continue' to continue.



Step 5 – Select Destination

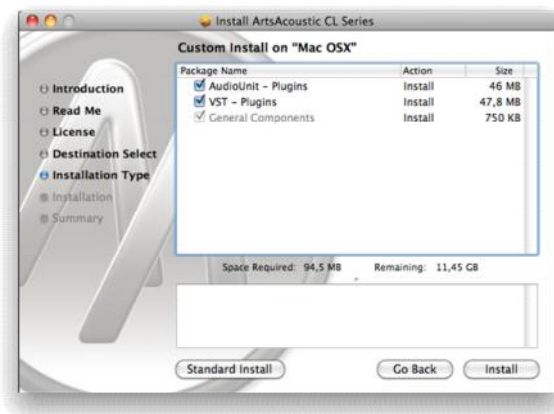


Click 'Continue' to continue.

Step 6 – Installation Type



If you want to individually select the components to be installed click 'Customize'. Here you can choose if you want to install the AU and/or VST version of the ArtsAcoustic BigRock.



If you are performing a new installation click 'Install'. Otherwise click 'Upgrade' for upgrading an existing installation.

Step 7 – Summary



After performing the installation a 'Summary' will be displayed.

Copy protection

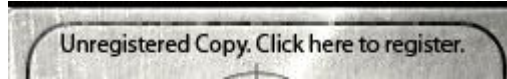
The Plugin has to be activated using a serial number. The serial number has been sent to you with your delivery notification email.

Open the file including your serial number which is attached to the delivery notification email and copy the complete content into your Clipboard.

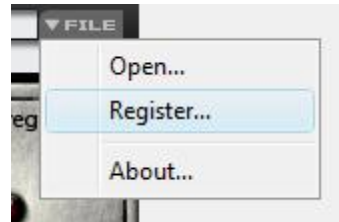
Load any Plugin of the ArtsAcoustic BigRock into your preferred host. In case the Plugin finds a valid serial number in the Clipboard it will register the ArtsAcoustic BigRock without any further actions on your side.



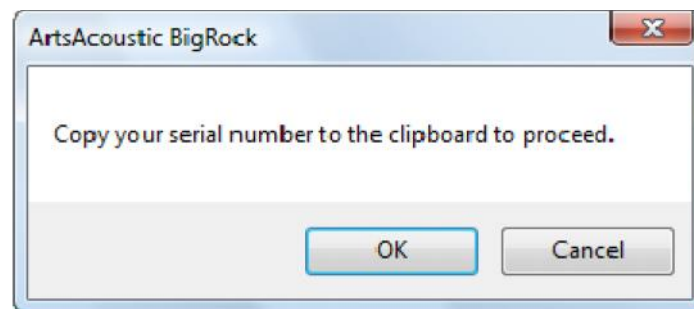
Otherwise you can start the registration process from within the Plugin by either clicking on the text “Unregistered Copy.”



or using the file menu “File|Register...”.



Open the file including your serial number which is attached to the delivery notification email.



Copy the complete content into your Clipboard and return to the Plugin. Press the button OK and it will register the ArtsAcoustic BigRock.

In case the serial number is not valid the Plugins of the ArtsAcoustic BigRock will not process any sample data.

Uninstall

- On Windows use the system tools to uninstall the ArtsAcoustic BigRock.
- On Mac OS X use the Uninstaller which is located in the Installation *.dmg file.



BigRock - Overview

Feature

All Plugins feature the following:

Feature	Description
Plugin category	Effect
Plugin Type	Phaser
Sample rate	22050 to 196000 Hz
32 bit processing	Supported
64 bit processing	Supported
32 bit precision	Supported
64 bit precision	Supported
Latency	0.0 ms

Tips and Tricks

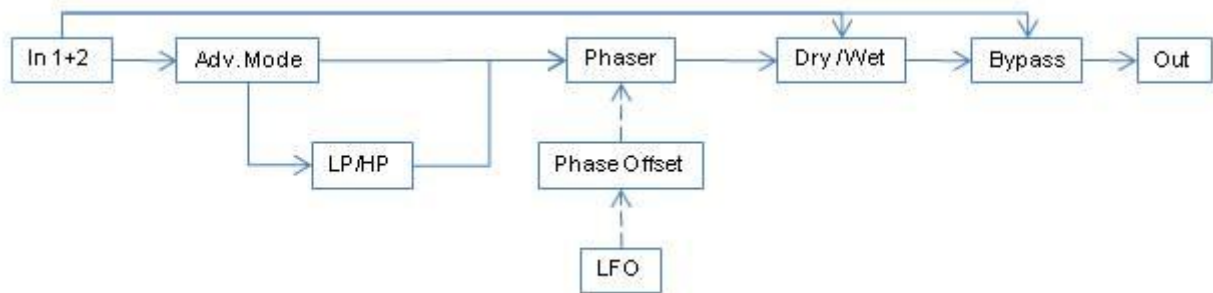
- The Plugin is not intended to be used as a Send Effect, but an Insert Effect.



BigRock - Details

This Plugin is a simulation of a conventional general purpose compressor/limiter circuit. Use this one, if you don't need any Mid/Side functionality, but a solid compression.

Signal Flow Diagram



Features and Functions

Following is a description of the Plugins features and functions. It is split up into general functions, basic mode and advanced mode parameters.

General Functions

File Menu

Further details can be found in chapter "Preset Manager".

Preset Menu

Further details can be found in chapter "Preset Manager".

Bypass

This button will bypass the complete processing. This can be helpful for A/B controlling the original and the compressed signal.



Basic Mode Functions

UI overview



Color Type

This switch determines whether BigRock is in high color or in low color mode. The high color mode returns a very characteristic, pronounced resonant result, whereas the low color mode is rather conservative in resonance. Furthermore when switching between those two modes, parts of the filter structure is changed too.



When in advanced mode (see below), the color mode switch becomes disabled in favor to the color knob, which adjusts the color continuously, rather than the two fixed states in basic mode. In advance mode the color switch is grayed out.

LFO Rate

This knob adjusts the LFO speed that controls the phasing. The controllable range of the LFO Rate is 0.01 Hz to 10.0 Hz.

Bypass

This button will bypass the complete processing. This can be helpful for A/B controlling the original and the compressed signal.



Advanced Mode

There are two independent modes available. When the logo is visible, BigRock is in basic mode, which perfectly emulates the behavior of the Small Stone mkII. If you click on the "advanced" tab below the logo, BigRock switches into a special, advanced mode, which is where you can have more detailed control over the sound shaping functions that are not available in the Small Stones.

Advanced Mode Functions

UI overview



LFO Rate

This knob adjusts the LFO speed that controls the phasing. The controllable range of the LFO Rate is 0.01 Hz to 10.0 Hz.



When the host sync is active the LFO is synced to the following note length: 32, 16, 8, 4, 2, 1/1, 1/2 dot, 1/1 T, 1/2, 1/4 dot, 1/2 T, 1/4, 1/8 dot, 1/4 T, 1/8, 1/16 dot, 1/8 T, 1/16, 1/32 dot, 1/16 T, 1/32



Color

This knob morphs between the high (88.5 %) and low (0.0 %) color settings found in the basic mode. However, in advanced mode you can even go higher than the high color state in basic mode. Higher color values returns a very characteristic, pronounced resonant result, whereas lower color values are rather conservative in resonance. Furthermore, adjusting the color knob, the whole filter structure is continuously morphed between two states, too.

Octave Amount

This knob adjusts the range in the frequency spectrum, that the LFO moves the filters within. The controllable range of the Octave Amount is 0.0 to 3.0 octaves.



Set this to zero, if you want to automate your own movement via your hosts automation.

Center

This knob adjusts the center frequency, that the LFO moves around of. The controllable range of the center frequency is 40.0 Hz to 4000.0 Hz.



If you want to build your own movement using your hosts automation curve, automate this parameter.

L/R Phase Offset

This knob shifts the LFO phase. Towards the left, the left phase is shifted, towards the right, the right phase is shifted, both up to 180 degrees. This gives a very wide stereo effect, especially if the input signal is mono.

LP Cutoff

This knob adjusts the frequency of a non-resonant lowpass filter. Frequencies above the adjusted value are cut with a slope of 24 db. The controllable range of the LP cutoff is 1000.0 Hz to 20000.0 Hz.

HP Cutoff

This knob adjusts the frequency of a non-resonant highpass filter. Frequencies below the adjusted value are cut with a slope of 12 db. The controllable range of the LP cutoff is 0.0 Hz to 1000.0 Hz.

Dry/Wet

This knob controls the mix of the dry signal and the signal that is fed through the phaser stage. When fully left, the signal is dry, when fully right, these two signals are mixed in a certain balance, so that the mix of both signals results in maximum phase shifting.

Sync On/Off

This switch syncs the LFO phase and speed to the host sequencer tempo.



Sync Phase

This knob sets the offset phase of the LFO, when in host sync mode. Use this knob to control, where the LFO phase is at a specific position in the song. This parameter ensures that the phaser does the exact same thing at the exact same position in the song, so the phaser always sounds the same at every song position.



Usage

We have implemented a very simply but efficient set of commands which are mainly available using your mouse.

Knobs, Sliders

Command	Description
Left mouse button	Coarse parameter entry using vertical mouse movement. <ul style="list-style-type: none"> You will be able to enter the values using a coarse increment, e.g. 0.0 dB, 1.0 dB, 2.0 dB The mouse pointer will be hidden as soon as you click on the control
Ctrl + Left mouse button Shift + Left mouse button	Fine parameter entry using vertical mouse movement. <ul style="list-style-type: none"> You will be able to enter the values using the finest available increment, e.g. 0.0 dB, 0.1 dB, 0.2 dB The mouse pointer will be hidden as soon as you click on the control <p>Note: On OS X you cannot use the "Ctrl" modifier.</p>
Right mouse button	An edit box will be displayed to enter the parameter value directly. <div data-bbox="890 1059 1098 1263" data-label="Image"> </div> <p>The entered value will be used as soon as you press the ENTER key.</p>
Double Click	Reset parameter to the default value.
Mouse wheel	Fine parameter entry. <ul style="list-style-type: none"> You will be able to enter the values using the finest available increment, e.g. 0.0 dB, 0.1 dB, 0.2 dB
Ctrl + Mouse wheel Shift + Mouse Wheel	Coarse parameter entry. <ul style="list-style-type: none"> You will be able to enter the values using a coarse increment, e.g. 0.0 dB, 1.0 dB, 2.0 dB <p>Note: On OS X you cannot use the "Ctrl" modifier.</p>

Buttons, Switches

Command	Description
Left mouse button	A single click on the control will trigger the command.



Parameter Automation

All parameters can be automated using your hosts capabilities.



Preset Manager

The ArtsAcoustic Plugins features a built in Preset Manager. The Preset Manager can be used to open, save, delete, manage and share the presets.



For best cross platform and host to host compatibility we do not recommend to use the Preset Manager provided by the host software. The Preset Manager of the ArtsAcoustic Plugins uses its own format which is compatible on all platforms, hosts and future versions of the Plugins.

Presets

The presets are split up into two different main categories

- Factory Presets
- User Presets

Each of the Plugins of the ArtsAcoustic BigRock has its own preset file format and can manage separate folders for the User Presets. It is also possible to use the same folder and therefore the same sub folder structure to manage the User Presets.

Factory Presets

The Factory Presets can be accessed using the “Preset” menu. Factory Presets cannot be changed or deleted using the Preset Manager. All Factory Presets are saved in a special factory Preset Folder. A list of all available Factory Presets can be found in chapter “Appendix I – Factory Presets”.

User Presets

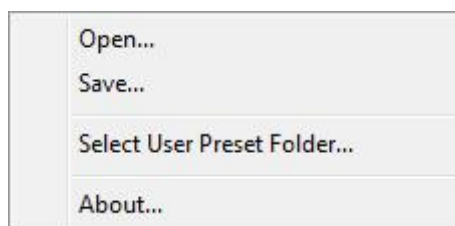
The User Presets can be accessed using the “Preset” menu. All User Presets are saved in a customizable folder and can be fully managed using the Preset Manager.

Autoload Preset

The Plugin will try to load a preset called “autoload” from within the root of the User Preset Folder on startup. If it cannot find this preset the Plugin will be initialized with its default settings.

File Menu

The “File” menu is used to load and save presets beside the Preset Manager. This way it is possible to share settings with other users or save presets in other folders than the defined User Preset Folder.



Open...

A preset can be opened using this menu. A file system browser will be opened to select the wanted preset.

Save...

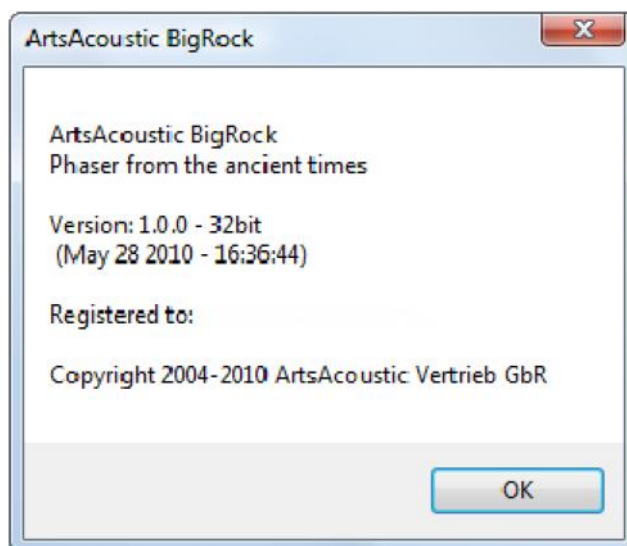
A preset can be saved using this menu. A file system browser will be opened to select the wanted preset name and location. The preset must not be saved within the User Preset Folder.

Select User Preset Folder...

It is possible to set the User Preset Folder using this menu. The User Preset Folder must be setup for each Plugin of the ArtsAcoustic BigRock separately. As long as the User Preset Folder has not been selected most functionality of the Preset Manager is not available.

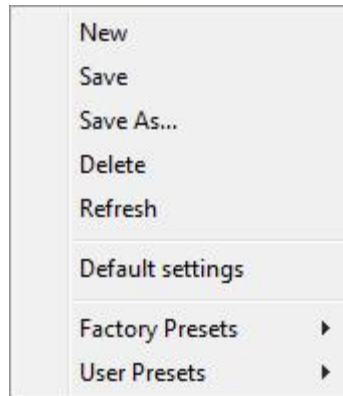
About...

The about window is used to display information about the active Plugin.



Preset Menu

The "Preset" menu is used to manage the presets within the Preset Manager. All functions within this menu will only operate on the special folders used by the Plugin.



New


A new preset can be created using this menu.


Save

The currently opened preset can be saved using this menu. As long as no preset has been opened using the Preset Manager an error message will be displayed.

Save As...

A preset can be saved using this menu. A file system browser will be opened to select the wanted preset name and location. The preset must be saved within the User Preset Folder or its sub folders.


 Attention: This function can be used to overwrite existing presets. Any overwritten preset cannot be recreated from within the Plugin.

 Use the menu "File|Save..." to save a preset into different folders than the User Preset Folder.

Delete

The currently opened preset can be deleted using this menu. As long as no preset has been opened using the Preset Manager an error message will be displayed.

Before the preset gets deleted an additional requester asks for permission to proceed.

 Attention: The preset will be physically removed from the file system and cannot be accessed anymore.



Refresh

The preset folder structures will be reloaded. This can be useful if presets in the User Preset Folder have been changed manually.

Default settings

The Plugin will be reset to its default settings.

Factory Presets >

From within this menu all Factory Presets are available. A Factory Preset cannot be deleted or overwritten using the Preset Manager functionality. When changes have been made to a Factory Preset it is possible to save it to the User Preset Folder using "Save As...". A list of all available Factory Presets can be found in chapter "Appendix I – Factory Presets".

User Presets >

From within this menu all User Presets are available.

Preset Browser

The Preset Browser can be used to browse through all Factory Presets and User Presets.



It is possible to browse through the presets using the buttons "Left Arrow" and "Right Arrow". It will cycle through all presets backwards ("Left") until it reaches the first Factory Preset or forward ("Right") until it reaches the last User Preset.

The name of the currently active preset is displayed in the middle between the buttons "Left Arrow" and "Right Arrow".



Final Words

If you managed to read the manual up to here you should be well equipped to use the ArtsAcoustic BigRock on a professional basis. Secondly we will have reached our goal of writing a comprehensive, coherent, informative and perhaps also entertaining guidebook. We hope that both has become the truth and wish you a lot of fun while working with the ArtsAcoustic BigRock.

Your ArtsAcoustic Team

Support

Use the online forum provided on our website:

<http://www.artsacoustic.com>



License Agreement

This is a legal agreement between you, the end user (the USER), and ArtsAcoustic Vertrieb GbR (the AAVGbR).

The enclosed AAVGbR software program (the SOFTWARE) is licensed by AAVGbR for use only on the terms set forth herein. Please read this license agreement. Installing the program indicates that you accept these terms.

License of unregistered Software

An unregistered copy of the SOFTWARE ("UNREGISTERED SOFTWARE") may be used by the USER for evaluation purposes. The UNREGISTERED SOFTWARE may be freely copied and distributed by the USER to other users for their evaluation.

Grant of License

AAVGbR grants to you the right to use a copy of the enclosed SOFTWARE as indicated on all your computers which are used in the context of one single project (i.e. using several local network connected computers to work on one single project).

Copyright

The SOFTWARE is owned by AAVGbR and is protected by German copyright laws and international treaty provisions.

Acceptance of this license agreement

By downloading and/or installing this SOFTWARE, the USER agrees to the terms of this LICENSE.

Disclaimer of warranty and liability

THE SOFTWARE AND THE ACCOMPANYING FILES ARE PROVIDED "AS IS" WITHOUT WARRANTY OF ANY KIND. TO THE MAXIMUM EXTENT PERMITTED BY APPLICABLE LAW, AAVGbR DISCLAIMS ALL WARRANTIES, EXPRESSED OR IMPLIED, INCLUDING, BUT NOT LIMITED TO, ANY IMPLIED WARRANTIES OF PERFORMANCE, MERCHANTABILITY, FITNESS FOR A PARTICULAR PURPOSE, AND NONINFRINGEMENT. TO THE MAXIMUM EXTENT PERMITTED BY APPLICABLE LAW, IN NO EVENT SHALL AAVGbR BE LIABLE FOR ANY DIRECT, INDIRECT, CONSEQUENTIAL OR INCIDENTAL DAMAGES (INCLUDING, BUT NOT LIMITED TO, DAMAGES FOR LOSS OF BUSINESS PROFITS, BUSINESS INTERRUPTION OR LOSS OF BUSINESS INFORMATION) ARISING OUT OF THE USE OF OR INABILITY TO USE THE SOFTWARE. ANY LIABILITY OF AAVGbR WILL BE LIMITED EXCLUSIVELY TO PRODUCT REPLACEMENT OR REFUND OF ORIGINAL PURCHASE PRICE.



Other restrictions

You may not rent, sell, lease or share the SOFTWARE. You may not reverse engineer, decompile, disassemble, or create derivative works from the SOFTWARE.

Invalid provisions

If any provision of this LICENSE shall be declared invalid or unenforceable, the remaining provisions of this LICENSE shall remain in full force and effect to the fullest extent permitted by law. In such event, each provision of this LICENSE which is invalid or unenforceable shall be replaced with a provision as similar in terms to such invalid or unenforceable provision as may be possible which is legal and enforceable.

Entire agreement

This LICENSE is the entire agreement between AAVGbR and the USER, and supersedes any other agreement, oral or written, and may not be changed except by a written signed agreement.

General

This LICENSE is the entire agreement between AAVGbR and the USER, and supersedes any other agreement, oral or written, and may not be changed except by a written signed agreement.

This Agreement will be governed by the laws of Germany. Should you have any questions concerning this Agreement, or if you desire to contact ArtsAcoustic Vertrieb GbR for any reason, please write: ArtsAcoustic Vertrieb GbR, Kaiserstrasse 131, 72764 Reutlingen, Germany.



Copyrights and Trademarks

The manual and the software described therein are supplied under formal license. They may be used and copied only under the conditions of this licensing agreement. The data contained in the manual only serves for information purposes and may be changed without prior announcement. The information contained in the manual does not constitute a legal obligation of ArtsAcoustic Vertrieb GbR. ArtsAcoustic is not responsible for any eventual faulty or inaccurate information contained in the manual. The manual and any parts thereof must not be reproduced or transmitted without the prior and explicit permission of ArtsAcoustic Vertrieb GbR.

ArtsAcoustic and all ArtsAcoustic product names are trademarks of ArtsAcoustic Vertrieb GbR. Mac and the Mac logo are trademarks of Apple Computer, Inc., registered in the U.S. and other countries. The Build for Mac OS X graphic is a trademark of Apple Computer, Inc., used under license. The Audio Units logo and the Audio Units symbol are trademarks of Apple Computer, Inc. Microsoft® and Windows® are trademarks of Microsoft Corporation, registered in the U.S. and other countries. Cubase and VST are registered trademarks of Steinberg Media Technologies GmbH. All other trademarks are the property of their respective owners.

© Copyright 2003-2011 ArtsAcoustic Vertrieb GbR. All Rights Reserved.

www.artsacoustic.com



Appendix I - Factory Presets

Following you can find a list of all available Factory Presets.

Category	Name	Comment
	EP Oldschool Funk Swirl	
	GT For Low Hard Funk Pickings	
	GT Funk Talker Strumms	
	GT Hard Funk Pickings	
	Orig. Hi Color (Adv. Mode)	
	Orig. Hi Color	
	Orig. Lo Color	
	PD Ambient Constant Move 01	
	PD Ambient Constant Move 02	
	PD Bandpassed Stereoswirl	
	PD Deep Resonant	
	PD Eminent Jarre HiColor	
	PD Fast Wobbler	
	PD Inverted Pan	
	PD Sawpad Transformation	
	PD Slow Pad Addon	
	PD Subtle Wavesall-in pumper	



Appendix II – Version History

Following is a list of all released versions.

Date	Version	Comment
2010-07-07	1.0.0	<ul style="list-style-type: none"> Initial release
2010-10-22	1.0.1	<ul style="list-style-type: none"> Added: Windows 64bit version Added: OSX Carbon UI - implemented, but not supporting sub menus yet. Fixed: aliasing effects have been audible in some cases Fixed: BigRock sometimes caused very loud spikes when browsing the presets. Fixed: "Midi out" caused an error in some hosts (AudioMulch, Bidule, Kore2) Fixed: factory presets are now flagged as factory presets Fixed: resync without clicks (Studio One) Fixed: sync now working in all known cases Fixed: some repaint issues Fixed: OSX mouse wheel behavior is now more like under Windows Fixed: Mousewheel support added (Nuendo) Fixed: some more possible heap corruptions Fixed: disabled some dbl clicks on switch style controls
2011-06-26	1.0.7	<ul style="list-style-type: none"> Added: OSX 64bit version Fixed: demo versions not working properly in some hosts (Energy XT 1/2) Fixed: OSX Carbon UI - did not save presets properly in some hosts Fixed: AU version not working in some hosts (Studio One, Maschine, Kore) Fixed: OSX Carbon UI - did cause trouble with the preset manager (it always loaded the previous preset) Fixed: OSX Cocoa UI - did cause crashes in Logic. Fixed: DEMO versions did not work properly Fixed: removed some unnecessary repaints Fixed: BR does not cause unpleasant spikes anymore Fixed: BR the "Default settings" also reset the LFO speed Fixed: Windows - hiding the mouse cursor uses another more compatible method Fixed: OSX - open/save dialog does not shutdown Logic anymore Fixed: AU demo version do share the same name as the full version Fixed: toggling between synced and unsynced mode sometimes changed the sync speed Fixed: lfo was not reset properly when starting the plugin for



Date	Version	Comment
		<p>the first time.</p> <ul style="list-style-type: none">• Fixed: sometimes the first control was not updated properly and remains unusable (bound to max value)• Fixed: when switching a preset while playing or changing a parameter the audio engine stopped (OSX/Logic)• Fixed: Mono and StereoToMono versions didn't work properly in some hosts (OSX/Logic)• Fixed: the param smoother did not always work properly therefore the smoothing has been enhanced